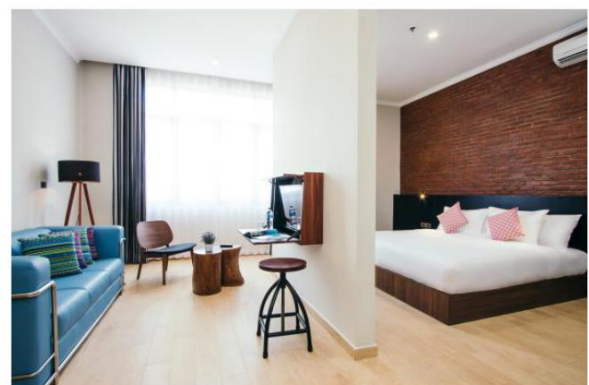
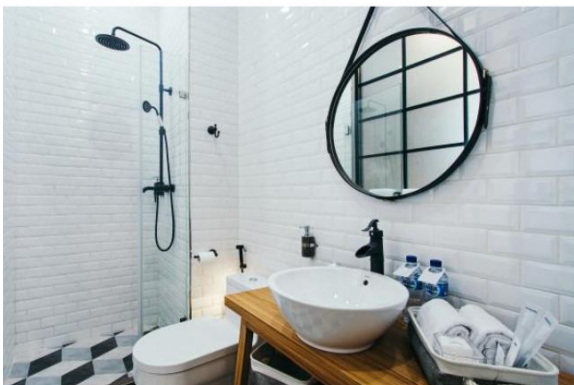




loft  
MANADO  
Indonesia

S LOFT MANADO  
Jalan Sam Ratulangi II No 118  
Manado 95117  
North Sulawesi, Indonesia

T: +62 431 856016  
F: +62 431 856015  
E: [rsvn@sloftmanado.com](mailto:rsvn@sloftmanado.com)  
W: [www.sloftmanado.com](http://www.sloftmanado.com)





**S LOFT MANADO**  
Jalan Sam Ratulangi II No 118  
Manado 95117  
North Sulawesi, Indonesia

T: +62 431 856016  
F: +62 431 856015  
E: [rsvn@sloftmanado.com](mailto:rsvn@sloftmanado.com)  
W: [www.sloftmanado.com](http://www.sloftmanado.com)

S Loft Manado is located on Jalan Sam Ratulangi II No 118, Manado 95117, in Wanea, Tanjung Batu neighborhood. The hotel is designed in a classic contemporary loft style with high ceilings and modern finishes and furniture, unique to the hotel market in Manado.

The hotel skillfully combines comfort and design with the pleasure of personalized services provided by dedicated Lifestyle Hosts taking care of your every need. A relaxing The Living Room on the ground floor offers a quiet space to work, meet and socialize with the joy of complimentary refreshments.

Our city boutique hotel in Manado features 42 accommodation units, with King or Twin beds, consisting of 29 Smart Rooms, 4 Cozy Rooms, 1 Tower Room, 3 Studio Rooms, 4 Loft Suites, and 1 Grand Loft. All rooms and suites feature custom designed furniture to allow for maximum floor space, luxury bedding, a refreshing walk-in rain shower and convenient amenities.

Experience a new way of city travel where our Lifestyle Managers take care of your every need and enjoy all-day complimentary refreshments at our self-service The Living Room, where people from all ways of life come together to dine, work or socialize.

<b>Date of Opening</b>	28 May 2018
<b>Location</b>	Wanea, Tanjung Batu
<b>Address</b>	Jalan Sam Ratulangi II No 118, Manado 95117, Indonesia
<b>Website</b>	<a href="http://www.sloftmanado.com">www.sloftmanado.com</a>
<b>Hotel Management</b>	Miners Hospitality ( <a href="http://www.hotelminers.com">www.hotelminers.com</a> )
<b>Brand</b>	S Loft
<b>Owning Company</b>	PT SLoft Wanea Manado
<b>Hotel General Manager</b>	Steven Piri



**S LOFT MANADO**  
Jalan Sam Ratulangi II No 118  
Manado 95117  
North Sulawesi, Indonesia

T: +62 431 856016  
F: +62 431 856015  
E: [rsvn@sloftmanado.com](mailto:rsvn@sloftmanado.com)  
W: [www.sloftmanado.com](http://www.sloftmanado.com)

## ACCOMMODATION

Total 42 accommodation units

29 Smart Rooms	(16sqm)
4 Cozy Rooms	(25sqm)
1 Tower Room	(20sqm)
3 Studio Rooms	(30sqm)
4 Loft Suites	(40sqm)
1 Grand Loft	(60sqm)

## ROOM FEATURES & AMENITIES

All non-smoking bedrooms

All suites feature Zipper Beds (Twin convertible to King). Extra bed available upon request

Luxurious rain shower in all rooms & suites

Spacious Bathtub in Grand Loft

Personalized in-room music system with mobile access (AUX)

Coffee / Tea making facilities

Individual controlled air-conditioning

Personal electronic safe

Hairdryer

Wireless high-speed internet access

In-room telephone

LED TV

Shower & bath gels, convenience products



**S LOFT MANADO**  
Jalan Sam Ratulangi II No 118  
Manado 95117  
North Sulawesi, Indonesia

T: +62 431 856016  
F: +62 431 856015  
E: [rsvn@sloftmanado.com](mailto:rsvn@sloftmanado.com)  
W: [www.sloftmanado.com](http://www.sloftmanado.com)

## **SERVICES**

Lifestyle Host at your service

Transfers to and from the hotel upon request

Self-service The Living Room with complimentary refreshments

Wi-Fi access throughout the hotel

Laundry valet service

Sightseeing, Diving & Trekking trip arrangements

Picnic / lunch / dinner options

## **THE LIVING ROOM**

The hotel offers complimentary breakfast to all guests at it's the Living Room on the ground floor.

Throughout the day, hotel guests can enjoy complimentary refreshments as well.

## **NEIGHBORHOOD**

Manado city is the provincial capital of North Sulawesi and the starting point of the Minahasa region's many attractions. Located in midst of nature's most precious gems, yet well developed with a large variety of shopping and dining options, Manado is an adventure lover's paradise, particularly well known among scuba divers.

## **DIRECTIONS TO US**

### **By Private Car**

The hotel is located on Jalan Sam Ratulangi II No 118. Free parking is available nearby.

### **By Hotel Car**

The hotel can provide transportation to and from Sam Ratulangi International Airport Manado. The private driver will personally welcome you and drive you comfortably to the hotel with a short 40 minutes drive.

## **VOLTAGE**

230 volts, 50 cycles



S LOFT MANADO  
Jalan Sam Ratulangi II No 118  
Manado 95117  
North Sulawesi, Indonesia

T: +62 431 856016  
F: +62 431 856015  
E: [rsvn@sloftmanado.com](mailto:rsvn@sloftmanado.com)  
W: [www.sloftmanado.com](http://www.sloftmanado.com)

## IMMIGRATION

Visitors to Indonesia must possess a passport valid for at least six months upon arrival and proof of onward passage. Visa requirements are determined by nationality. Various nationalities do not require a visa and will receive a 30 days free passage. Visitors should consult their local Indonesian consulate for visa requirements.

### **For more information please contact:**

Edward Kuslam, Sales & Marketing Manager, [sales@sloftmanado.com](mailto:sales@sloftmanado.com)

Pricillia Tuilan, Sales Admin, [info@sloftmanado.com](mailto:info@sloftmanado.com)